

s/v GRACIE EMMETT: LAKE CHAMPLAIN - Corridor and Cruising Ground, Part 3

Part 3. Lake Champlain Anchorages - Kingsland to Valcor

By: Duane Nealon



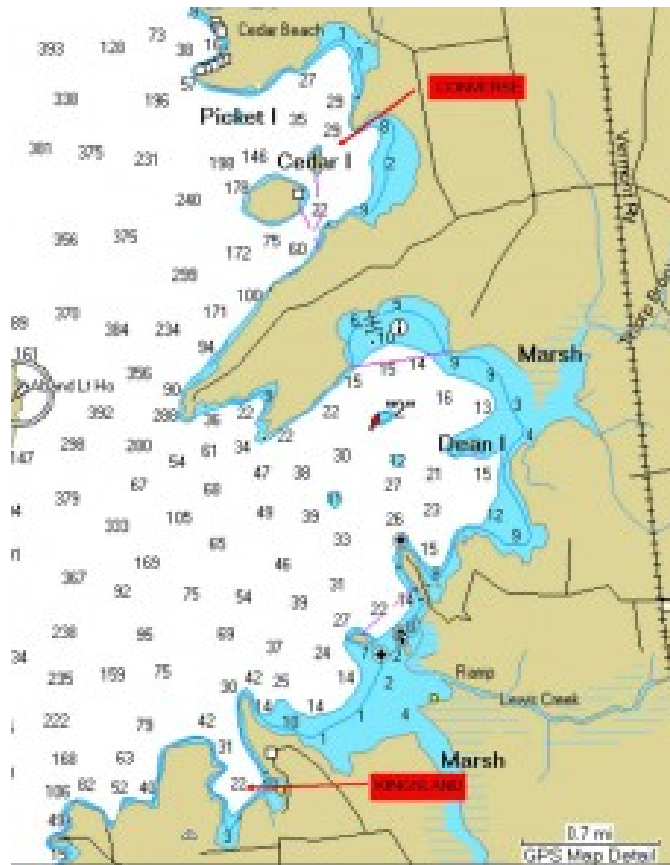


KINGSLAND BAY is about 8 miles north of Westport and because [Kingsland State Park](#) is a popular summer destination, both the park facilities and bay can be congested during the day, especially when one of the many special events is underway. No pets are allowed ashore at the park.





Kingsland is an excellent south wind anchorage, if the wind shifts, an alternative anchorage can be found 3 miles north in Converse Bay, which has the added protection of two small islands.



[caption id="attachment_1869" align="alignnone" width="397" caption="CONVERSE BAY"]



[/caption]

BURLINGTON, the largest city in Vermont, with a long maritime history, is situated 18 miles north of Kingsland Bay. You can't visit Burlington without being captivated by its livability and essence of uniqueness and originality. The shoreline and downtown are well designed and pedestrian/pet friendly, with an extensive network of waterfront pathways and central business district vehicle-free zones. The vibrant downtown area and several universities and colleges add to the cosmopolitan flavor. A good starting point when arriving in the harbor is the [Community Boathouse](#) which acts as a visitor center for newly arrived sailors. Boathouse employees also manage the harbor facilities and transient moorings/slips.



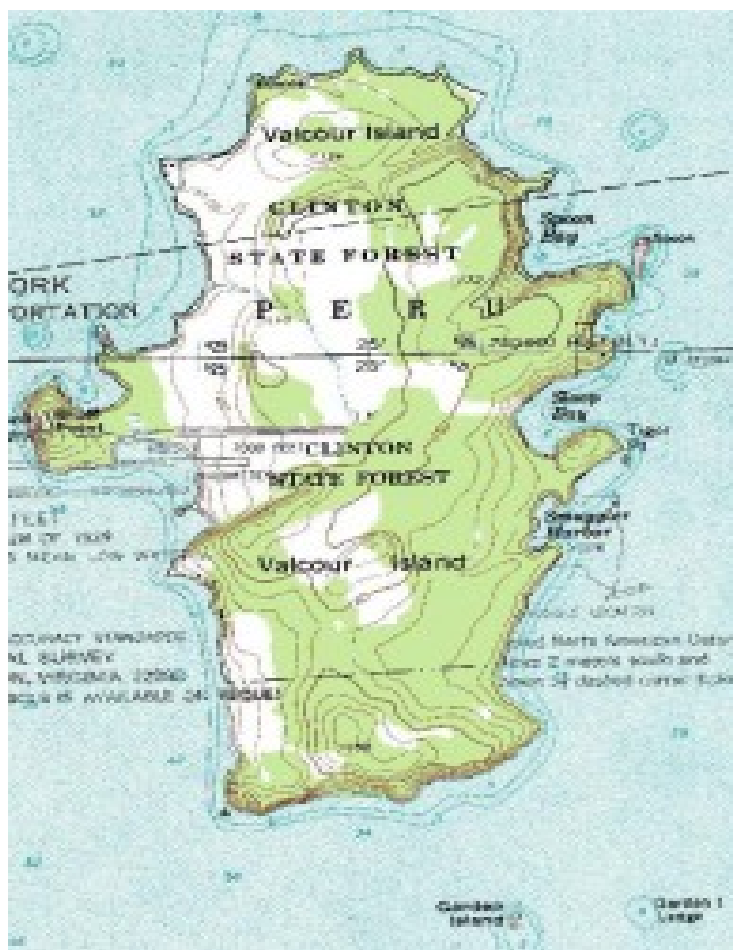






Burlington is best enjoyed in measured doses. Lake Champlain sailors can return several times during a cruising season to fully experience the rich offering of cultural and recreational delights. When things become too hectic, retreat can be found 4 miles to the North Bay by anchoring off [Bernard Leddy Park](#) and from there, a pleasant diversion to [Valcor Island](#) which is located 15 miles north, just south of the City of [Plattsburgh, New York](#)





VALCOR ISLAND is just the opposite of Burlington. There are still traces of human settlement on the island, but it is now a nature preserve and thus, inhabited only by wildlife. Decisive naval battles occurred at [Valcor Island](#) during the American Revolution and the War of 1812. There are well-marked hiking trails on the southern end of the island, and for budding paleontologists, there are fossils waiting to be discovered. No matter which way the wind blows, it is rare that a safe

anchorage can't be found within the undulating shorelines around the island.





Cruising Lake Champlain could be a lifetime pursuit or a once in a lifetime experience. The itinerary highlighted in this three-part series could be accomplished in a week or a month, yet even these selected anchorages and harbor-towns only touch the surface of the numerous possibilities on this captivating and unforgettable Lake. If you can, take the time to explore this very special cruising ground!

Gracie Emmett DE 32 is for sale. Email: de32ge@gmail.com(see following link for extensive photos and detailed boat inventory):

<http://downeasteryachts.com/forums/boat-profiles/de32-gracie-emmett>